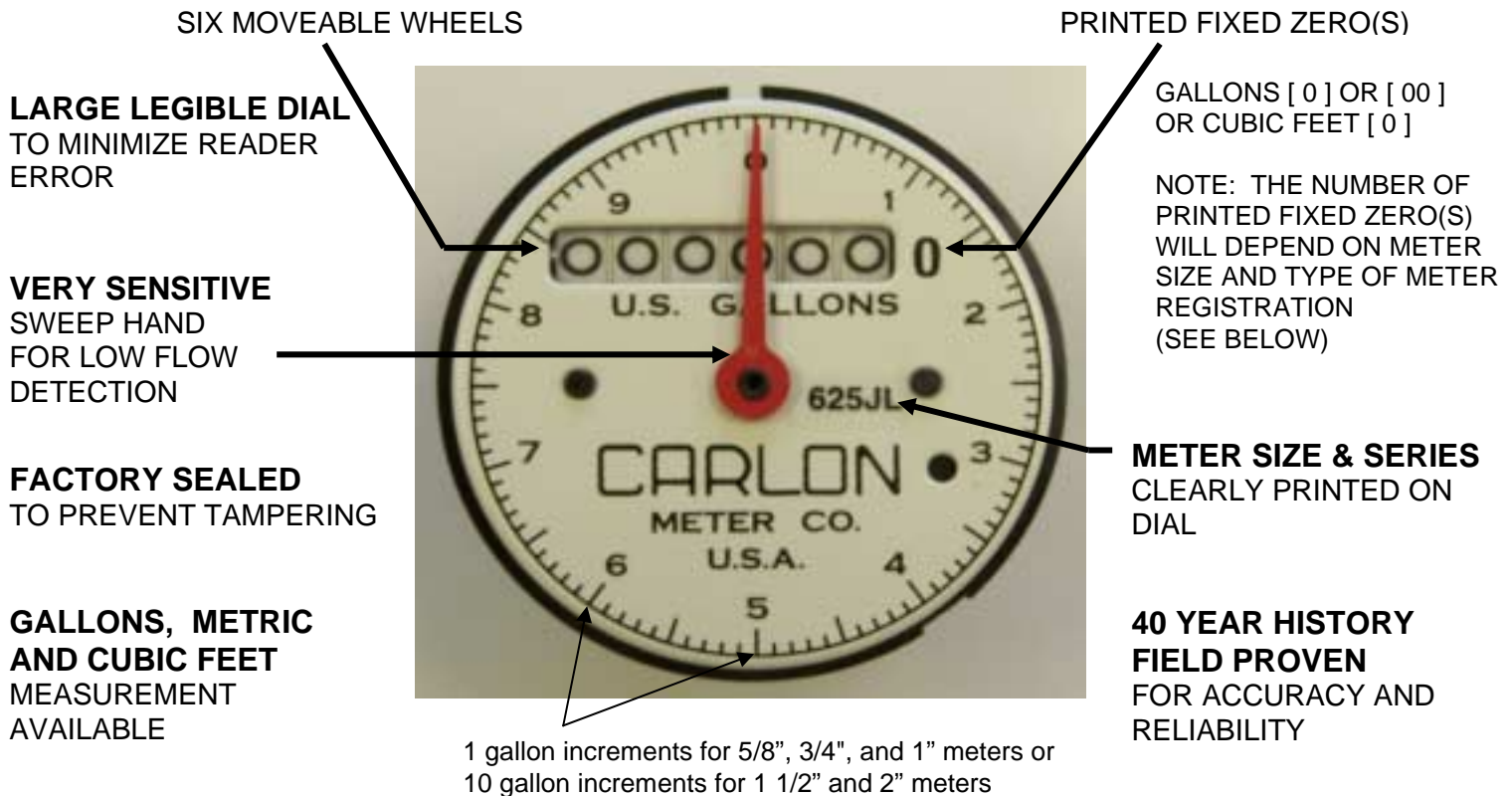


**HOW TO READ
MAGNETIC COUPLED, GEAR REDUCING REGISTERS
FOR JSJ, STD, JL & JLR SERIES METERS**



HOW TO READ REGISTER:

READ NUMBERS STRAIGHT ACROSS FROM LEFT TO RIGHT, INCLUDING THE PRINTED ZERO(S)

EXAMPLE: 5/8" REGISTER READS – 000271[0]
THIS NUMBER REPRESENTS 2710 GALLONS HAVE PASSED THROUGH THIS METER.

GALLON REGISTRATION -

5/8", 3/4", and 1" SIZE METERS:

DIAL FACE UNITS READ IN INCREMENTS OF 1 GALLON
EVERY REVOLUTION OF RED SWEEPHAND MEASURES 10 GALLONS

1 1/2" AND 2" SIZE METERS:

DIAL FACE UNITS READ IN INCREMENTS OF 10 GALLONS
EVERY REVOLUTION OF RED SWEEPHAND MEASURES 100 GALLONS

CUBIC FEET REGISTRATION -

5/8", 3/4", AND 1" SIZE METERS:

DIAL FACE UNITS READ IN INCREMENTS OF .1 CUBIC FOOT.
EVERY REVOLUTION OF RED SWEEPHAND MEASURES 1 CUBIC FOOT

1 1/2" AND 2" SIZE METERS:

DIAL FACE UNITS READ IN INCREMENTS OF 1 CUBIC FOOT.
EVERY REVOLUTION OF RED SWEEPHAND MEASURES 10 CUBIC FEET.

NOTE: REMOTE READERS ARE SHOWN ON SEPARATE PAGES