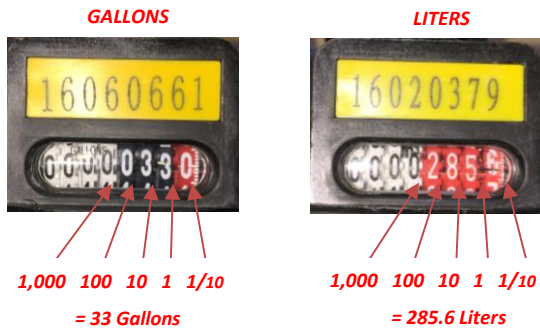


HOW TO READ A REGISTER



CARLON METER, INC. PRODUCT WARRANTY

Carlon Meter, Inc. (hereinafter Carlon or "the company") warrants products of its manufacture to be free of defects in material or workmanship. Liability under this warranty extends for twelve (12) months from the date of purchase. Liability is limited to repair or replacement of any failed product or assembly proven to be defective in material or workmanship upon manufacturer's examination. Removal and installation costs are not included under this warranty. Manufacturer's liability shall never exceed selling price of the meter or assembly in question. Carlon disclaims all liability for damage its products caused as the result of improper installation, maintenance, use or attempts to operate products beyond their intended functionality, intentionally or otherwise. Carlon is not responsible for damages, injuries or expenses incurred through the use of its products. The above warranty is in lieu of all other warranties, either expressed or implied. No agent of the company is authorized to alter or otherwise revise this warranty.

08/16

VPD® Meter Installation Instructions

Note: Meter is tested to US Standards prior to shipment.
Odometer will show the test volume of water.

1. Flush the line thoroughly after plumbing changes to eliminate the possibility of foreign contaminants reaching the meter.
 2. Install meter vertically, horizontally or on an incline.
 3. It is recommended that if there is any possibility that the water supply contains foreign contaminants, a strainer should be installed between the water supply and the meter.
 4. It is not recommended that the meter be run for long periods of time at the maximum flow rating as excess wear will result and the life of the meter will be reduced.
 5. Protect the meter from freezing and from heat in excess of 122°F.
- Straight unobstructed pipe section upstream of meter as follows:
 - One Bend = 10 X Diameter of Pipe
 - Valves (check, gate, etc.) = 12 X Diameter of Pipe
 - Two bends or one tee and one bend or bends at random = 25 X Diameter of Pipe
 - Straight unobstructed pipe section downstream of meter = 5 X Diameter of Pipe

Installation and Operating Instructions

Carlon® Model VPD®

Vertical Positive Displacement Meter
with Dry Contact Pulse



Leaders in water measurement and control

1710 Eaton Drive
Grand Haven, MI 49417

Ph: (616) 842-0420
Fax: (616) 842-1265
E-mail: carlon@carlonmeter.com
Website: www.carlonmeter.com

SPECIFICATIONS

Reed Switch:	Dry contact, normally open, 24V, 10mA maximum
Pressure Rating:	Maximum 232 psi
Temperature Range:	33°F < 122°F. Protect from freezing 1°C < 50°C
GPM Range:	.1 - 22 GPM Continuous 16 GPM .38 - 83.3 LPM Continuous 60.6 LPM
Accuracy:	+/- 2.0% of maximum flow when operating between minimum and maximum flow range.
Meter Options:	750VPDG-1 (Gallons) 750VPDL-1 (Liters)
Contact Points:	1 Gallon per contact (VPDG-1) 1 Liter per contact (VPDL-1)
Meter Housing:	Corrosion resistance body made of engineered plastic
Features:	<ul style="list-style-type: none"> • Rotary Piston • Back flow prevention - internal no-return valve • Register is liquid filled and sealed for easy reading and long term clarity • Magnetic Drive • Integral Strainer

WIRING THE N/O REED SWITCH

Attach the Red and Black wire to 2 different terminals.
The bare wire is not used.