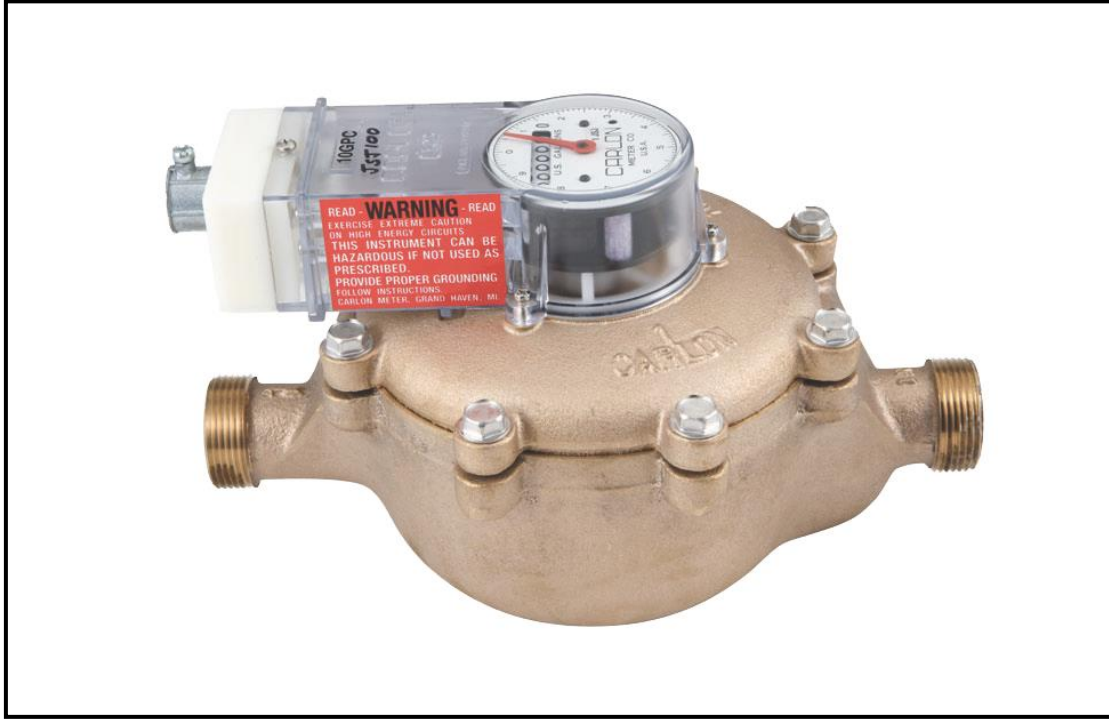


JSJ® METERS



Carlon JSJ® electric contacting positive displacement meters have long been recognized as the industry leader for those who require a meter that combines incredible reliability, durability and accuracy. The electric contact voltage and amperage rating is the industry's highest. Our magnetic drive, oscillating piston, dry contact design sets Carlon JSJ® meters apart from the competition. Used in conjunction with Carlon timers and controls, our JSJ® bronze meters allow you to customize a system allowing strict control over your critical cooling tower, boiler, water softener regeneration, or any chemical treatment application you require. Carlon JSJ® meters meet or exceed AWWA specifications.



1710 EATON DRIVE • GRAND HAVEN, MICHIGAN 49417

PHONE (616) 842-0420 • FAX (616) 842-1265

E-MAIL CARLON@CARLONMETER.COM • WEBSITE WWW.CARLONMETER.COM

METER SELECTION CHART

METER/PIPE SIZE	MODEL	*CONTINUOUS FLOW	FLOW RANGE	WEIGHT	LENGTH	HEIGHT	WIDTH
5/8" X 1/2"	JSJ062	10 GPM	1/4 - 20 GPM	7.2 lbs.	7 1/2"	5 1/8"	4 3/8"
5/8" X 3/4"	JSJ0621	10 GPM	1/4 - 20 GPM	7.5 lbs.	7 1/2"	5 1/8"	4 3/8"
3/4" X 3/4"	JSJ075	15 GPM	1/2 - 30 GPM	9.3 lbs.	9"	5 5/8"	4 1/2"
1"	JSJ100	25 GPM	3/4 - 50 GPM	17.8 lbs.	10 3/4"	6 7/16"	6 7/16"
1 1/2"	JSJ150	50 GPM	2 - 100 GPM	25.0 lbs.	12 5/8"	7 3/8"	7 9/16"
2"	JSJ200	80 GPM	2 - 160 GPM	38.0 lbs.	15 1/4"	8"	8 3/4"

***Continuous Flow:** The size of meter selected should be based upon continuous flow, GPM, as opposed to pipe size. For example, if it is determined that continuous flow is 25 GPM, a 1" meter should be selected rather than a 3/4" meter.

ORDERING INFORMATION: Specify model number shown followed by choice of contact pulse setting desired.

Example: 3/4" meter, 1" pipe size, 10 gallons per contact = JSJ0751-10 GPC.

X = AVAILABLE CONTACT SETTINGS

(All contact settings are pre-set at the factory to your specification – call for available Metric contact settings.)

GPC = Gallons Per Contact • CFPC = Cubic Feet Per Contact

METER SIZE	.5 CFPC	1 GPC	1 OR 2 CFPC	2.5 GPC/CFPC	5 GPC	5 CFPC	10 GPC	10 CFPC	20 GPC	20 CFPC	25 GPC	25 CFPC	50 GPC/CFPC	100 GPC/CFPC	200 GPC	250 GPC	500 GPC	1000 GPC
5/8" X 1/2"	X	RS	X	RS	X	X	X	X	X	X	X	X	X	X	X	X	X	X
5/8" X 3/4"	X	RS	X	RS	X	X	X	X	X	X	X	X	X	X	X	X	X	X
3/4" X 3/4"	X	RS	X	RS	X	X	X	X	X	X	X	X	X	X	X	X	X	X
1"	X	RS	X	RS	X	X	X	X	X	X	X	X	X	X	X	X	X	X
1 1/2"	N/A	N/A	N/A	N/A	RS	X	RS	X	N/A	X	RS	X	X	X	X	X	X	X
2"	N/A	N/A	N/A	N/A	RS	X	RS	X	N/A	X	RS	X	X	X	X	X	X	X

RS – JSJ® Meter with this GPC setting furnished with dry contact reed switch; 24V, 100 mA maximum

SPECIFICATIONS

Pressure Rating: 30 - 150 psi.

Temperature Range: 35° - 105°F. Protect the meter from freezing.

PH Level Range: 6.5 – 8.0

Accuracy: +/- 1.5% of maximum flow when operating between minimum and maximum flow range.

Register Options: U.S. Gallons and Cubic Feet

Micro Switch: The switch is a normally open type micro-switch and is rated for a maximum of 10 amps at 250V AC (1/4 hp)

Installation Instructions:

1. Flush the line thoroughly after all plumbing changes to prevent contaminants from entering the meter.
2. Install horizontally with the register facing up and inlet port facing the water supply line.
3. For outdoor installation, protect meter from direct exposure to the elements.
4. Protect meter from backflow of water opposite of indicated flow direction.

Helpful Hints:

1. All valves used in a water line need to be operated slowly, and all electrically actuated valves should be slow closing. This will eliminate possible meter damage from water hammer in your system. Carlon offers an excellent slow closing valve (SCV).
2. Install a strainer upstream of your water meter to protect the meter and any other in-line process equipment from becoming jammed by particulate matter.

Warranty: Carlon Meter, Inc. warrants its products to be free of defect in material or workmanship for a period of twelve months from the date of purchase. Contact us to obtain a copy of our complete statement of warranty.